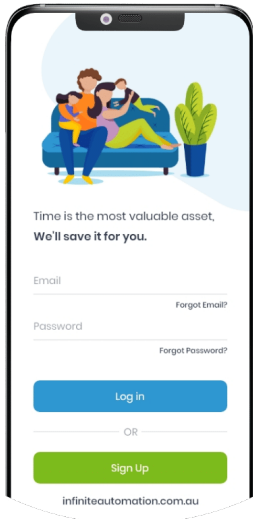


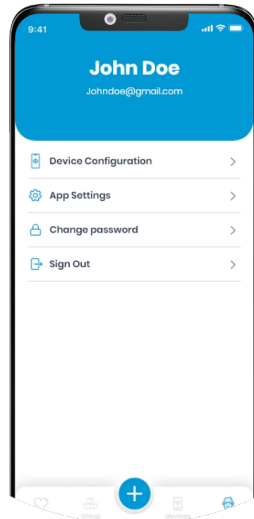
Before Paring: Please ensure the motor is not in deep sleep mode during the pairing process.

APP CONFIGURATION



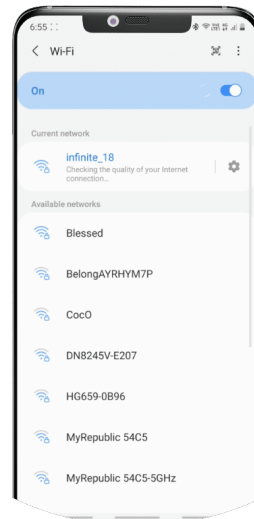
STEP 1: DOWNLOAD THE APP

- Download infinite automation application
- Register your account with Infinite automation.



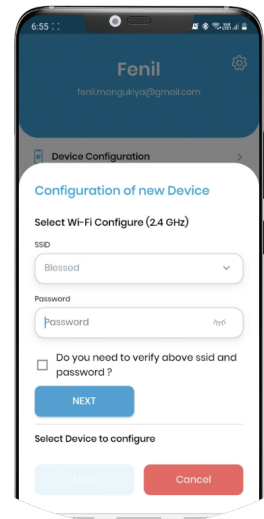
STEP 2.1: CONNECT HUB WI-FI

- Go to 'User' Tab, and select 'Device Configuration'.
- Follow the configuration steps.
- Copy the password 'automation'.



STEP 2.2: CONNECT HUB WI-FI

- Go to your phone's Wi-Fi settings and select the hub's Wi-Fi network¹.
- Paste the password to connect.

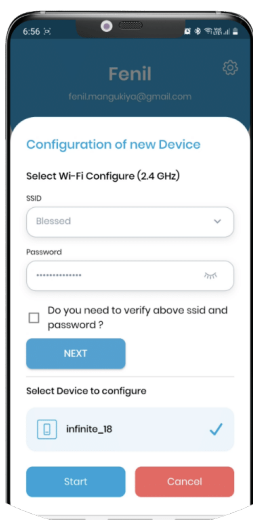


STEP 3: RETURN TO THE APP

- Once the hub Wi-Fi is connected, go back to the Infinite Automation app.
- Enter your home Wi-Fi details.

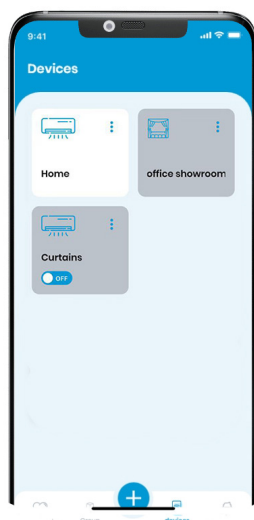
¹ The name of the hub's wifi will contain "Infinite_xx".

² Device only supports 2.4 GHz wireless frequency. Ensure you are using the correct 2.4GHz Wi-Fi.



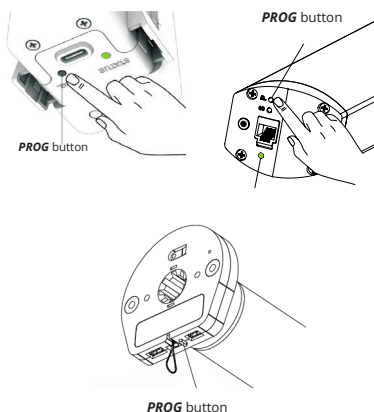
STEP 4: CONNECT HOME WIFI

- Enter your Wi-Fi name (SSID) & Password.²
- Tap 'Next' to continue.
- After successful authentication of Wi-Fi SSID and Password, Tap Start to proceed with configuration.



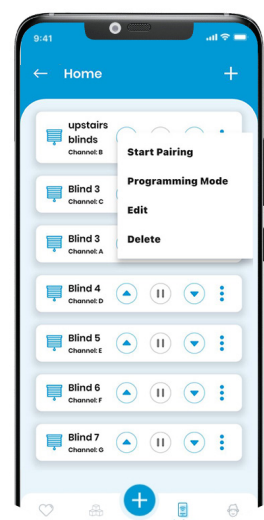
STEP 5: SELECT THE HUB

- Go to Devices in the app.
- Select the connected hub.



STEP 6: PAIRING MOTOR

- Go to the Luna motor.
- Hold down the prog button until the light remains green.



STEP 7: ADD THE MOTOR

- In the app, select Add Blind/ Curtain.
- Press Start Pairing.
- Once pairing is complete, the motor will be connected to the Infinity Hub.

INFINITE HUB INSTRUCTION

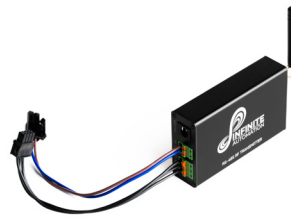
BEFORE PARING

Prepare the following items:

1. Infinity Hub controller
2. Transmitter
3. Adapter



Transmitter



Infinity Hub controller



Adapter

INFINITE HUB SET UP

STEP 1: CONNECT THE TRANSMITTER TO THE CONTROLLER



Take the wiring from the transmitter and connect it to the controller.

STEP 2: POWER THE INFINITY HUB



Connect the adapter to the 12V socket on the controller.



Plug the adapter into the wall power outlet.