

Luna™ TECHNOLOGY

5 YEARS WARRANTY

HOME AUTOMATION

... WHERE IT MATTERS



LUNA GLIDE | LUNA BELT | LUNA ROLL





## CONTENTS

<b>Luna Glide</b>	6-10
<b>Luna Belt</b>	12-21
<b>Luna Roll</b>	22-32
<b>Luna Accessories</b>	33-34
<b>Luna Instructional Video</b>	36

# Luna™ TECHNOLOGY



Australian designed and engineered



**Matter Over Thread** combines two technologies—**Matter** and **Thread**—to enable seamless and reliable smart device connectivity in homes and buildings.

**Matter:** A universal smart home standard developed by the Connectivity Standards Alliance (CSA), ensuring interoperability between devices.

**Key Features:**

**Interoperability:** Devices work across platforms (e.g., Apple HomeKit, Google Home, Amazon Alexa).

**Ease of Use:** Simple setup and onboarding.

**Security:** Strong encryption and authentication.

**IP-Based Communication:** Reliable local and cloud connectivity.

**Thread:** A low-power, wireless mesh networking protocol designed for IoT devices.

**Key Features:**

**Energy Efficiency:** Great for battery-powered devices. Unlike traditional wireless systems like Wi-Fi, Thread is a mesh network, meaning devices communicate directly with one another without relying on a central hub.

**Reliability:** Mesh network avoids single points of failure.

**Scalability:** Handles many devices without performance issues



# Luna<sup>TM</sup> GLIDE

## CURTAIN TRACK MOTOR

### **Versatile Installation:**

Luna Glide Suits K51 Square, K58 Vogue, and Vogue 35 Tracks.

### **Bended Track:**

Able to track along bent tracks.

### **Intuitive Touch Control:**

Experience ultra-responsive operation at your fingertips.

### **Safe Magnetic Charging:**

Enjoy long-lasting use (9-12 months) with just a 6-hour recharge.

### **Compact Design:**

Recommended 60mm wheel carrier spacing for seamless operation.

### **Track Care:**

No silicon spray/lubricant required. For optimal performance, clean tracks with wet wipes.

### **Robust Capacity:**

Reliably supports up to 12Kg of fabric.

### **Smart Home Ready:**

Fully compatible with Wi-Fi and voice control via matter.



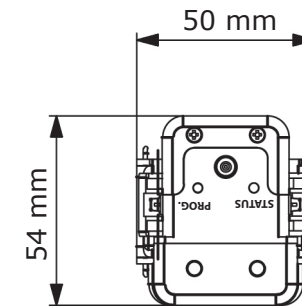
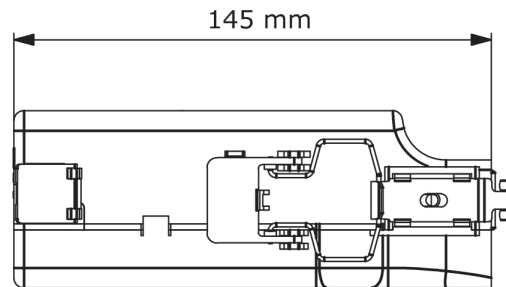


## LUNA Glide Curtain Track Motor

All pricing excludes GST. Subject to change without notification.



SKU	Description	UOM	Size/Box QTY
L-GTM	<b>Luna Glide Track Motor</b>	Each	25
	Operating Voltage: 7.4 V DC		
	Rated Power: 10 W		
	Linear Speed: 10 cm/s		
	Max. Curtain Weight (typ.): 12 kg		
	Max. Track Width One-way (typ.): 4.5 m		
	Max. Track Width Center Open (typ.): 6.4 m		





## LUNA Glide Curtain Track Motor Components

All pricing excludes GST. Subject to change without notification.



**SKU**

**Description**

**UOM**

**Size/Box  
QTY**

L-CSBLK

Luna Cover Sock - Black

Each

25

L-CSGR

Luna Cover Sock - Grey

Each

25



J0008-P-60BLK

Linked Carrier For Hook - 60 mm Spacing Heart Pendant - Black  
(50 m Roll)

Roll

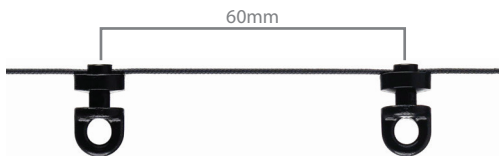
1

J0008-P-60WH

Linked Carrier For Hook - 60 mm Spacing Heart Pendant - White  
(50 m Roll)

Roll

1



J0009-P-60BLK

Linked Carrier For Hook - 60mm Spacing Round Pendant - Black  
(50 m Roll)

Roll

1

J0009-P-60WH

Linked Carrier For Hook - 60mm Spacing Round Pendant - White  
(50 m Roll)

Roll

1



## LUNA Glide Curtain Track Motor Components

All pricing excludes GST. Subject to change without notification.

500  
LINKS  
PER  
BOX

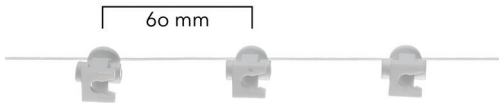


SKU	Description	UOM	Size/Box QTY
J00010-P-60BLACK	Linked Carrier On Strip For Hook - 60 mm Spacing - Black	Box	1
J00010-P-60WHITE	Linked Carrier On Strip For Hook - 60 mm Spacing - White	Box	1

500  
LINKS  
PER  
BOX



J00011-P-60BLACK	Linked Carrier On Strip For Stud - 60 mm Spacing - Black	Box	1
J00011-P-60WHITE	Linked Carrier On Strip For Stud - 60 mm Spacing - White	Box	1



J2104S-P-60BLACK	Linked Carriers With Wheel For Stud - 60 mm Spacing- Black 50 m Roll (80% Fullness)	Roll	1
J2104S-P-60WHITE	Linked Carriers With Wheel For Stud - 60 mm Spacing- White 50 m Roll (80% Fullness)	Roll	1



J2105-P-60BLK	Linked Carrier Without Wheel For Stud - 60 mm Spacing - Black (50 m Roll)	Roll	1
J2105-P-60WHITE	Linked Carrier Without Wheel For Stud - 60 mm Spacing - White (50 m Roll)	Roll	1



## LUNA Glide Curtain Track Motor Components

All pricing excludes GST. Subject to change without notification.

Suits K51 Square



Suits K58 Vogue



Suits Vogue 35



# Luna<sup>TM</sup> BELT

BELTED TRACK MOTOR

**Bendable capability:**

Suitable for curved/ corner walls.

**Touch activation:**

Operates the curtain with a simple pull.

**Void windows:**

Suitable for ultra high Void windows.

**Carrying capacity:**

Reliably supports up to 45kg of fabric.

**Smart home ready:**

Fully compatible with Wi-Fi and voice control via matter.



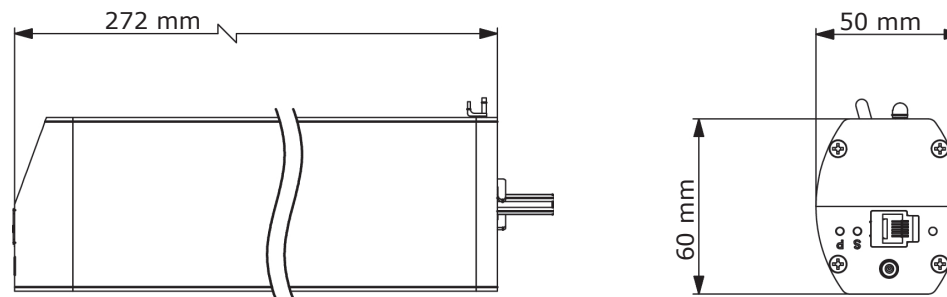


## LUNA Belt Track Motor - Battery

All pricing excludes GST. Subject to change without notification.



SKU	Description	UOM	Size/Box QTY
T500-52	<b>Luna Belt Battery Curtain Motor - Battery</b>	Each	20
	Operating Voltage: 7.4 V DC		
	Rated Power: 35 W		
	Linear Speed: 15 cm/s		
	Max. Curtain Weight (typ.): 45 kg		
	Max. Track Width (typ.): 15 m		



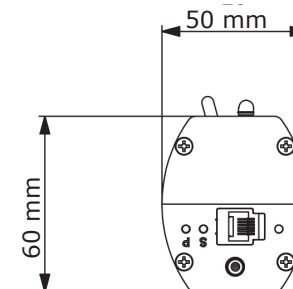
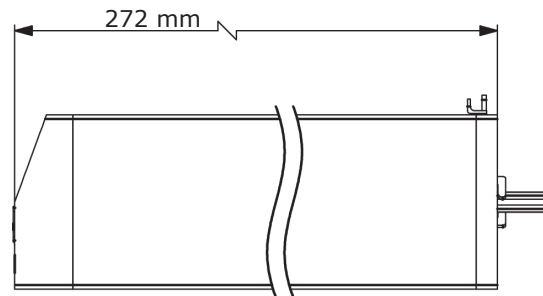


## LUNA Belt Track Motor - Hardwired

All pricing excludes GST. Subject to change without notification.



SKU	Description	UOM	Size/Box QTY
TD20-HD	<b>Luna Belt Curtain Motor Hardwired (240 V)</b>	Each	20
	Operating Voltage: 24 V AC		
	Rated Power: 35 W		
	Linear Speed: 15 cm/s		
	Max. Curtain Weight (typ.): 45 kg		
	Max. Track Width (typ.): 15 m		
302-007	Hardwired Molex Cable	Each	20





## LUNA Belt Track Motor Components

All pricing excludes GST. Subject to change without notification.



SKU

Description

UOM

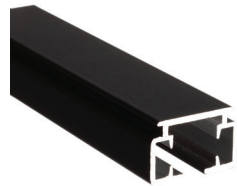
Size/Box  
QTY

2002-00/WH

Luna Belt Track 6.4 m - White (electroplated)

Length

10



2002-00/BL

Luna Belt Track 6.4 m - Black (electroplated)

Length

10

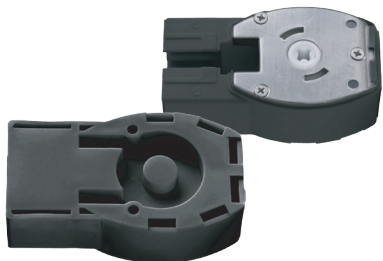


2002-002WH

Luna Belt End Pulley Motor System - White

Each

10



2002-002BL

Luna Belt End Pulley Motor System - Black



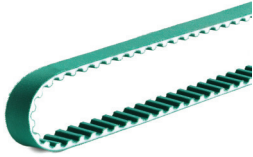


Each

10



## LUNA Belt Track Motor Components





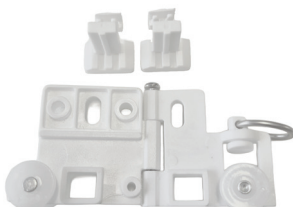
All pricing excludes GST. Subject to change without notification.

	SKU	Description	UOM	Size/Box QTY
	2002-010-WH	Luna End Pulley Cover - White	Each	10
	2002-010-BL	Luna End Pulley Cover - Black	Each	10
	2002-005B	Luna Belt (Green) 100 m Rolls	Mtr	1
	2002-003	Luna Master Carrier Set	Set	10
	2002-006	Luna Straight One Way + Center Open Arm	Each	10



## LUNA Belt Track Motor Components

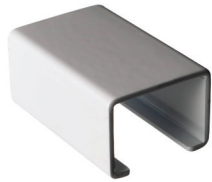
All pricing excludes GST. Subject to change without notification.

	SKU	Description	UOM	Size/Box QTY
	2002-007	Luna Wave Fold One Way Arm	Each	10
	2002-008	Luna Wave Fold Center Open Arm	Each	10
	2002-009	Luna S.Fold For Stud One Way Arm	Each	10
	2002-0010	Luna S.Fold For Stud Center Open Arm	Each	10
	2002-004	Luna Swivel Carrier for Bends	Each	10



## LUNA Belt Track Motor Components

All pricing excludes GST. Subject to change without notification.



**SKU**

**Description**

**UOM**

**Size/Box  
QTY**

202-009-WH

Luna Track Connector - White

Each

10

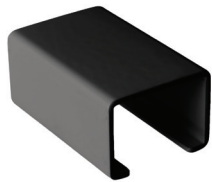


202-009-HD-WH

Luna Track Connector Heavy Duty - White

Each

10



202-009-BL

Luna Track Connector - Black

Each

10



202-009-HD-BL

Luna Track Connector Heavy Duty - Black

Each

10



## LUNA Belt Track Motor Components

All pricing excludes GST. Subject to change without notification.



SKU	Description	UOM	Size/Box QTY
202-006-WH	Luna Fabric Return Clip - White	Each	100



202-006-BL	Luna Fabric Return Clip - Black	Each	100
------------	---------------------------------	------	-----



202-007-WH	Luna Fabric Return Clip for Stud - White	Each	100
------------	--	------	-----


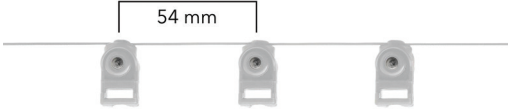

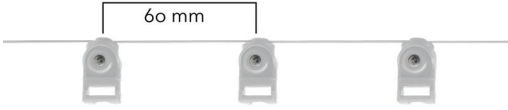




202-007-BL	Luna Fabric Return Clip for Stud - Black	Each	100
------------	--	------	-----



## LUNA Belt Track Motor Components

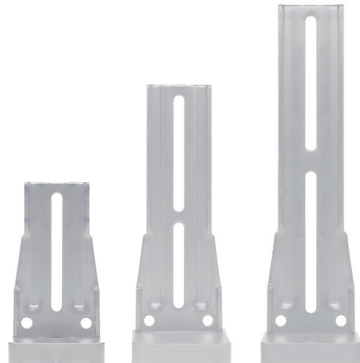
All pricing excludes GST. Subject to change without notification.

	SKU	Description	UOM	Size/Box QTY
	STO12	Luna Soft Wheel Carrier	Each	200
	L-J0390-54-WH	Luna Wheel Carrier 54- White	Roll	1
	L-J0390-54-BL	Luna Wheel Carrier 54- Black	Roll	1
	L-J0390-60-WH	Luna Wheel Carrier 60- White	Roll	1
	L-J0390-60-BL	Luna Wheel Carrier 60- Black	Roll	1
	STO51	Luna HD ZP End Stop	Each	100



## LUNA Belt Track Motor Components

All pricing excludes GST. Subject to change without notification.



**SKU**

**Description**

**UOM**

**Size/Box  
QTY**

J2829-1NCM-WHITE

K51 Bracket Without Camlock Single - White

Each

25

J2829-1NCM-BLACK

K51 Bracket Without Camlock Single - Black

Each

25

J2729-1NCM-WHITE

K51 Bracket Without Camlock Double - White

Each

25

J2729-1NCM-BLACK

K51 Bracket Without Camlock Double - Black

Each

25



J2629-1NCM-WHITE

K51 Bracket Without Camlock Extra Double - White

Each

25

J2629-1NCM-BLACK

K51 Bracket Without Camlock Extra Double - Black





Each

25



## LUNA Belt Track Motor Components

All pricing excludes GST. Subject to change without notification.

	SKU	Description	UOM	Size/Box QTY
	L0021-WH	Luna Camlock Ceiling Bracket - White	Each	100
	L0021-BL	Luna Camlock Ceiling Bracket - Black	Each	100
	J0172-WH	Luna Cover for Camlock Ceiling - White	Each	500
	J0172-BL	Luna Cover for Camlock Ceiling - Black	Each	500
	202-004	Luna Ceiling Bracket - White	Each	100
	PA05-1000	Luna Wave Fold End Return	Each	100

# Luna<sup>TM</sup> ROLL

## TUBULAR MOTOR

### **Versatile installation:**

4 different crown/wheel drive options, allow for most tube types to be used with the tubular motor.

### **28mm Tubular Motor:**

The minimum size the 28mm tubular motor can fit into is a 500mm wide blind.

### **Pull cord mechanism:**

Optional chain pull operation.

### **Safe magnetic charging:**

Enjoy long lasting use (9-12 months) with just a 6-hour recharge.

### **The quietest motor in Australia:**

Our 32mm Ultra Tubular Motor can carry up to 15sqm, while not making a sound.

### **Smart home ready:**

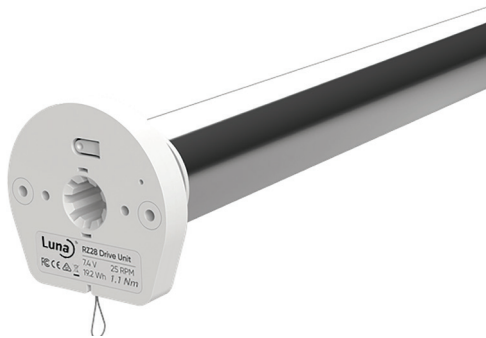
Fully compatible with Wi-Fi and voice control via matter.



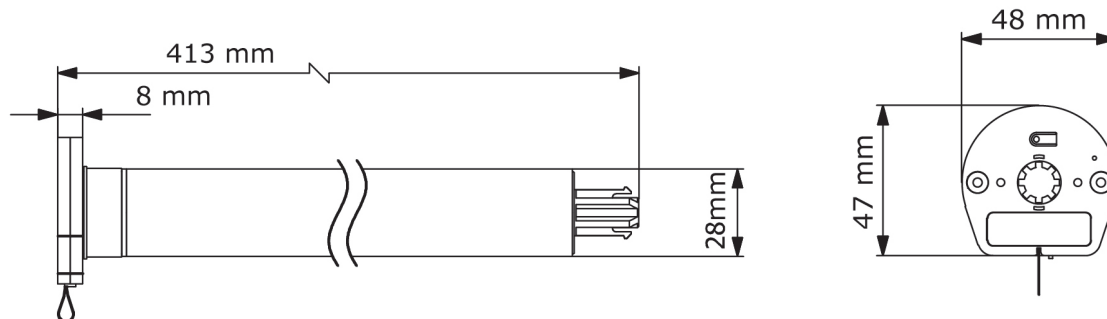


## LUNA Tubular Motor - 28mm Battery

All pricing excludes GST. Subject to change without notification.



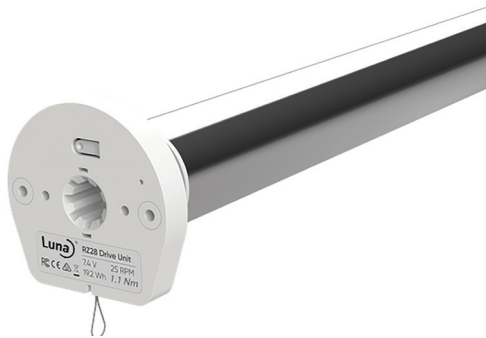
SKU	Description	UOM	Size/Box QTY
L-RTM28	<b>Luna Roll Tubular Motor - 28 mm Battery</b>	Each	20
	Operating Voltage: 7.4 V DC		
	Rated Power: 10 W		
	Rated Speed: 25 RPM		
	NM: 1.1		
	Max. Capacity: 6 SQM		
	Max. Kg: 3.5 kg		



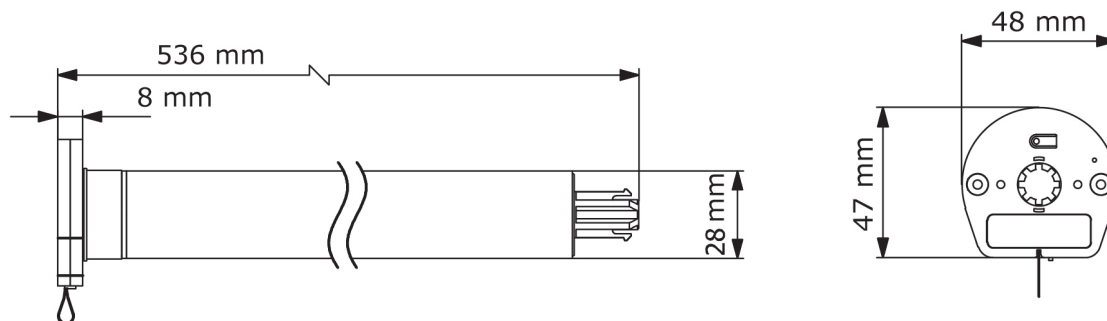


## LUNA Tubular Motor - 28mm Battery - MK2

All pricing excludes GST. Subject to change without notification.



SKU	Description	UOM	Size/Box QTY
L-RTM28-MK2	Luna Roll Tubular Motor - 28 mm Battery - MK2	Each	20
	Operating Voltage: 7.4 V DC		
	Rated Power: 10 W		
	Rated Speed: 25 RPM		
	NM: 2.0		
	Max. Capacity: 10 SQM		
	Max. Kg: 6 kg		

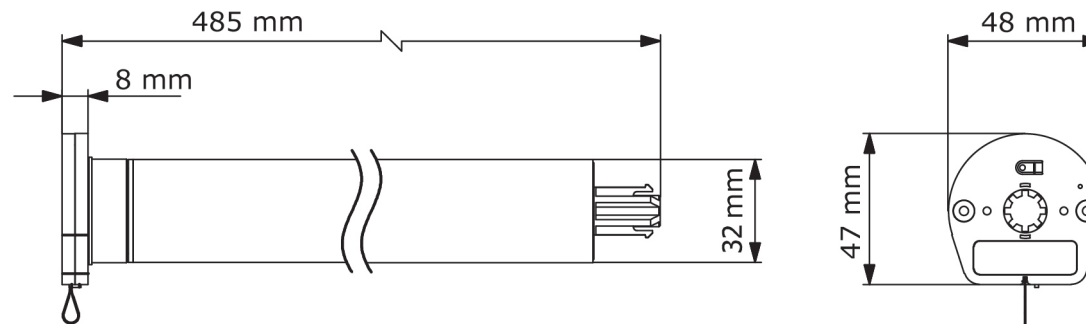




## LUNA Tubular Motor - 32mm Battery

All pricing excludes GST. Subject to change without notification.

SKU	Description	UOM	Size/Box QTY
L-RTM32	Luna Roll ULTRA Tubular Motor - 32mm Battery	Each	20
	Operating Voltage: 7.4 V DC		
	Rated Power: 25 W		
	Rated Speed: 25 RPM		
	NM: 3.0		
	Max. Capacity: 15 SQM		
	Max. Kg: 9 kg		



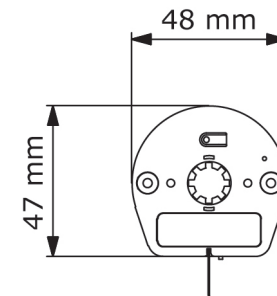
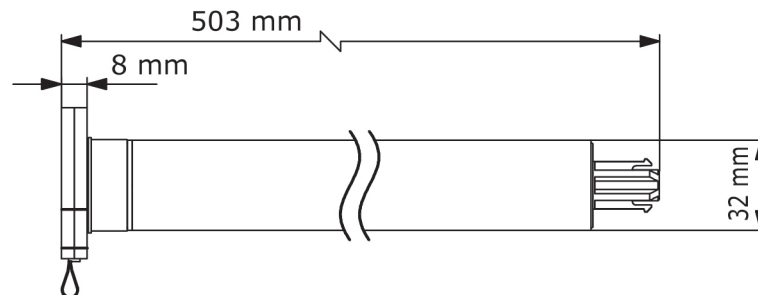


## LUNA Tubular Motor - 32mm Hardwired

All pricing excludes GST. Subject to change without notification.



KPS Item Number	Description	UOM	Size/Box QTY
L-RTM32-HD	<b>Luna Roll Tubular Motor - 32mm HardWired</b>	Each	20
	Operating Voltage: 100-240 V AC		
	Rated Power: 25 W		
	Rated Speed: 25 RPM		
	NM: 3.0		
	Max. Capacity: 15 SQM		
	Max. Kg: 9 kg		
302-007	Hardwired Molex Cable	Each	20





## LUNA Tubular Motor - Crown/Drive Set

All pricing excludes GST. Subject to change without notification.



KPS Item Number	Description	UOM	Size/Box QTY
201-001	Luna 28 mm - A Crown/Drive Set	Each	100



201-002	Luna 28 mm - B Crown/Drive Set	Each	100
---------	--------------------------------	------	-----



201-003	Luna 28 mm - C Crown/Drive Set	Each	100
---------	--------------------------------	------	-----



201-004	Luna 28 mm - D Crown/Drive Set	Each	100
---------	--------------------------------	------	-----



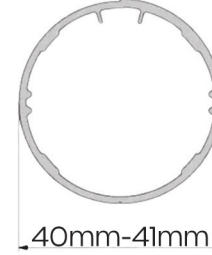
201-006	Luna 32 mm - D Crown/Drive Set	Each	100
---------	--------------------------------	------	-----

Suitable for 28mm Battery & 28mm MK2 Battery

**A Crown**



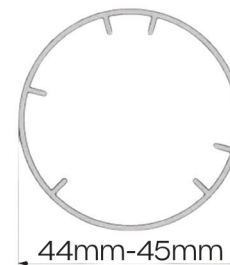
**B Crown**



**C Crown**

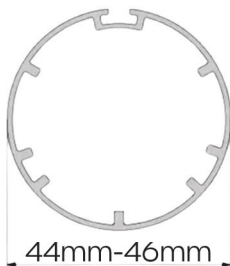


**D Crown**



Suitable for 32mm Battery & 32mm Hardwired

**D Crown**



Width

# Tubular Motor Size

Drop







	1.50	1.60	1.70	1.80	1.90	2.00	2.10	2.20	2.30	2.40	2.50	2.60	2.70	2.80	2.90	3.00	3.10	3.20	3.30	3.40	3.50	3.60	3.70	3.80	3.90	4.00	4.10	4.20	4.30	4.40	4.50	4.60	4.70	4.80	4.90	5.00	5.10	5.20	5.30	5.40	5.50	5.60	5.70	5.80	5.90	6.00
1.50	2.25	2.40	2.55	2.70	2.85	3.00	3.15	3.30	3.45	3.60	3.75	3.90	4.05	4.20	4.35	4.50	4.65	4.80	4.95	5.10	5.25	5.40	5.55	5.70	5.85	6.00	6.15	6.30	6.45	6.60	6.75	6.90	7.05	7.20	7.35	7.50	7.65	7.80	7.95	8.10	8.25	8.40	8.55	8.70	8.85	9.00
1.60	2.40	2.56	2.72	2.88	3.04	3.20	3.36	3.52	3.68	3.84	4.00	4.16	4.32	4.48	4.64	4.80	4.96	5.12	5.28	5.44	5.60	5.76	5.92	6.08	6.24	6.40	6.56	6.72	6.88	7.04	7.20	7.36	7.52	7.68	7.84	8.00	8.16	8.32	8.48	8.64	8.80	8.96	9.12	9.28	9.44	9.60
1.70	2.55	2.72	2.89	3.06	3.23	3.40	3.57	3.74	3.91	4.08	4.25	4.42	4.59	4.76	4.93	5.10	5.27	5.44	5.61	5.78	5.95	6.12	6.29	6.46	6.63	6.80	6.97	7.14	7.31	7.48	7.65	7.82	7.99	8.16	8.33	8.50	8.67	8.84	9.01	9.18	9.35	9.52	9.69	9.86	10.03	10.20
1.80	2.70	2.88	3.06	3.24	3.42	3.60	3.78	3.96	4.14	4.32	4.50	4.68	4.86	5.04	5.22	5.40	5.58	5.76	5.94	6.12	6.30	6.48	6.66	6.84	7.02	7.20	7.38	7.56	7.74	7.92	8.10	8.28	8.46	8.64	8.82	9.00	9.18	9.36	9.54	9.72	9.90	10.08	10.26	10.44	10.62	10.80
1.90	2.85	3.04	3.23	3.42	3.61	3.80	3.99	4.18	4.37	4.56	4.75	4.94	5.13	5.32	5.51	5.70	5.89	6.08	6.27	6.46	6.65	6.84	7.03	7.22	7.41	7.60	7.79	7.98	8.17	8.36	8.55	8.74	8.93	9.12	9.31	9.50	9.69	9.88	10.07	10.26	10.45	10.64	10.83	11.02	11.21	11.40
2.00	3.00	3.20	3.40	3.60	3.80	4.00	4.20	4.40	4.60	4.80	5.00	5.20	5.40	5.60	5.80	6.00	6.20	6.40	6.60	6.80	7.00	7.20	7.40	7.60	7.80	8.00	8.20	8.40	8.60	8.80	9.00	9.20	9.40	9.60	9.80	10.00	10.20	10.40	10.60	10.80	11.00	11.20	11.40	11.60	11.80	12.00
2.10	3.15	3.36	3.57	3.78	3.99	4.20	4.41	4.62	4.83	5.04	5.25	5.46	5.67	5.88	6.09	6.30	6.51	6.72	6.93	7.14	7.35	7.56	7.77	7.98	8.19	8.40	8.61	8.82	9.03	9.24	9.45	9.66	9.87	10.08	10.29	10.50	10.71	10.92	11.13	11.34	11.55	11.76	11.97	12.18	12.39	12.60
2.20	3.30	3.52	3.74	3.96	4.18	4.40	4.62	4.84	5.06	5.28	5.50	5.72	5.94	6.16	6.38	6.60	6.82	7.04	7.26	7.48	7.70	7.92	8.14	8.36	8.58	8.80	9.02	9.24	9.46	9.68	9.90	10.12	10.34	10.56	10.78	11.00	11.22	11.44	11.66	11.88	12.10	12.32	12.54	12.76	12.98	13.20
2.30	3.45	3.68	3.91	4.14	4.37	4.60	4.83	5.06	5.29	5.52	5.75	5.98	6.21	6.44	6.67	6.90	7.13	7.36	7.59	7.82	8.05	8.28	8.51	8.74	8.97	9.20	9.43	9.66	9.89	10.12	10.35	10.58	10.81	11.04	11.27	11.50	11.73	11.96	12.19	12.42	12.65	12.88	13.11	13.34	13.57	13.80
2.40	3.60	3.84	4.08	4.32	4.56	4.80	5.04	5.28	5.52	5.76	6.00	6.24	6.48	6.72	6.96	7.20	7.44	7.68	7.92	8.16	8.40	8.64	8.88	9.12	9.36	9.60	9.84	10.08	10.32	10.56	10.80	11.04	11.28	11.52	11.76	12.00	12.24	12.48	12.72	12.96	13.20	13.44	13.68	13.92	14.16	14.40
2.50	3.75	4.00	4.25	4.50	4.75	5.00	5.25	5.50	5.75	6.00	6.25	6.50	6.75	7.00	7.25	7.50	7.75	8.00	8.25	8.50	8.75	9.00	9.25	9.50	9.75	10.00	10.25	10.50	10.75	11.00	11.25	11.50	11.75	12.00	12.25	12.50	12.75	13.00	13.25	13.50	13.75	14.00	14.25	14.50	14.75	15.00
2.60	3.90	4.16	4.42	4.68	4.94	5.20	5.46	5.72	5.98	6.24	6.50	6.76	7.02	7.28	7.54	7.80	8.06	8.32	8.58	8.84	9.10	9.36	9.62	9.88	10.14	10.40	10.66	10.92	11.18	11.44	11.70	11.96	12.22	12.48	12.74	13.00	13.26	13.52	13.78	14.04	14.30	14.56	14.82	15.08	15.34	15.60
2.70	4.05	4.32	4.59	4.86	5.13	5.40	5.67	5.94	6.21	6.48	6.75	7.02	7.29	7.56	7.83	8.10	8.37	8.64	8.91	9.18	9.45	9.72	9.99	10.26	10.53	10.80	11.07	11.34	11.61	11.88	12.15	12.42	12.69	12.96	13.23	13.50	13.77	14.04	14.31	14.58	14.85	15.12	15.39	15.66	15.93	16.20
2.80	4.20	4.48	4.76	5.04	5.32	5.60	5.88	6.16	6.44	6.72	7.00	7.28	7.56	7.84	8.12	8.40	8.68	8.96	9.24	9.52	9.80	10.08	10.36	10.64	10.92	11.20	11.48	11.76	12.04	12.32	12.60	12.88	13.16	13.44	13.72	14.00	14.28	14.56	14.84	15.12	15.40	15.68	15.96	16.24	16.52	16.80
2.90	4.35	4.64	4.93	5.22	5.51	5.80	6.09	6.38	6.67	6.96	7.25	7.54	7.83	8.12	8.41	8.70	8.99	9.28	9.57	9.86	10.15	10.44	10.73	11.02	11.31	11.60	11.89	12.18	12.47	12.76	13.05	13.34	13.63	13.92	14.21	14.50	14.79	15.08	15.37	15.66	15.95	16.24	16.53	16.82	17.11	17.40
3.00	4.50	4.80	5.10	5.40	5.70	6.00	6.30	6.60	6.90	7.20	7.50	7.80	8.10	8.40	8.70	9.00	9.30	9.60	9.90	10.20	10.50	10.80	11.10	11.40	11.70	12.00	12.30	12.60	12.90	13.20	13.50	13.80	14.10	14.40	14.70	15.00	15.30	15.60	15.90	16.20	16.50	16.80	17.10	17.40	17.70	18.00
3.10	4.65	4.96	5.27	5.58	5.89	6.20	6.51	6.82	7.13	7.44	7.75	8.06	8.37	8.68	8.99	9.30	9.61	9.92	10.23	10.54	10.85	11.16	11.47	11.78	12.09	12.40	12.71	13.02	13.33	13.64	13.95	14.26	14.57	14.88	15.19	15.50	15.81	16.12	16.43	16.74	17.05	17.36	17.67	17.98	18.29	18.60
3.20	4.80	5.12	5.44	5.76	6.08	6.40	6.72	7.04	7.36	7.68	8.00	8.32	8.64	8.96	9.28	9.60	9.92	10.24	10.56	10.88	11.20	11.52	11.84	12.16	12.48	12.80	13.12	13.44	13.76	14.08	14.40	14.72	15.04	15.36	15.68	16.00	16.32	16.64	16.96	17.28	17.60	17.92	18.24	18.56	18.88	19.20
3.30	4.95	5.28	5.61	5.94	6.27	6.60	6.93	7.26	7.59	7.92	8.25	8.58	8.91	9.24	9.57	9.90	10.23	10.56	10.89	11.22	11.55	11.88	12.21	12.54	12.87	13.20	13.53	13.86	14.19	14.52	14.85	15.18	15.51	15.84	16.17	16.50	16.83	17.16	17.49	17.82	18.15	18.48	18.81	19.14	19.47	19.80
3.40	5.10	5.44	5.78	6.12	6.46	6.80	7.14	7.48	7.82	8.16	8.50	8.84	9.18	9.52	9.86	10.20	10.54	10.88	11.22	11.56	11.90	12.24	12.58	12.92	13.26	13.60	13.94	14.28	14.62	14.96	15.30	15.64	15.98	16.32	16.66	17.00	17.34	17.68	18.02	18.36	18.70	19.04	19.38	19.72	20.06	20.40
3.50	5.25	5.60	5.95	6.30	6.65	7.00	7.35	7.70	8.05	8.40	8.75	9.10	9.45	9.80	10.15	10.50	10.85	11.20	11.55	11.90	12.25	12.60	12.95	13.30	13.65	14.00	14.35	14.70	15.05	15.40	15.75	16.10	16.45	16.80	17.15	17.50	17.85	18.20	18.55	18.90	19.25	19.60	19.95	20.30	20.65	21.00
3.60	5.40	5.76	6.12	6.48	6.84	7.20	7.56	7.92	8.28	8.64	9.00	9.36	9.72	10.08	10.44	10.80	11.16	11.52	11.88	12.24	12.60	12.96	13.32	13.68	14.04	14.40	14.76	15.12	15.48	15.84	16.20	16.56	16.92	17.28	17.64	18.00	18.36	18.72	19.08	19.44	19.80	20.16	20.52	20.88	21.24	21.60
3.70	5.55	5.92	6.29	6.66	7.03	7.40	7.77	8.14	8.51	8.88	9.25	9.62	9.99	10.36	10.73	11.10	11.47	11.84	12.21	12.58	12.95	13.32	13.69	14.06	14.43	14.80	15.17	15.54	15.91	16.28	16.65	17.02	17.39	17.76	18.13	18.50	18.87	19.24	19.61	19.98	20.35	20.72	21.09	21.46	21.83	22.20
3.80	5.70	6.08	6.46	6.84	7.22	7.60	7.98	8.36	8.74	9.12	9.50	9.88	10.26	10.64	11.02	11.40	11.78	12.16	12.54	12.92	13.30	13.68	14.06	14.44	14.82	15.20	15.58	15.96	16.34	16.72	17.10	17.48	17.86	18.24	18.62	19.00	19.38	19.76	20.14	20.52	20.90	21.28	21.66	22.04	22.42	22.80
3.90	5.85	6.24	6.63	7.02	7.41	7.80	8.19	8.58	8.97	9.36	9.75	10.14	10.53	10.92	11.31	11.70	12.09	12.48	12.87	13.26	13.65	14.04	14.43	14.82	15.21	15.60	15.99	16.38	16.77	17.16	17.55	17.94	18.33	18.72	19.11	19.50	19.89	20.28	20.67	21.06	21.45	21.84	22.23	22.62	23.01	23.40
4.00	6.00	6.40	6.80	7.20	7.60	8.00	8.40	8.80	9.20	9.60	10.00	10.40	10.80	11.20	11.60	12.00	12.40	12.80	13.20	13.60	14.00	14.40	14.80	15.20	15.60	16.00	16.40	16.80	17.20	17.60	18.00	18.40	18.80	19.20	19.60	20.00	20.40	20.80	21.20	21.60	22.00	22.40	22.80	23.20	23.60	24.00

Suitable for 28mm Battery



## LUNA Tubular Motor Components






All pricing excludes GST. Subject to change without notification.

	KPS Item Number	Description	UOM	Size/Box QTY
	201-005	Luna Roll Chain Connector	Each	100
	2.5448MR	No.10 Metal Chain - Nickel Plated (150 m Roll - 410 Grade)	Roll	1
	2.5548SSR	No. 10 Chain - Stainless Steel (150 m Roll - 410 Grade)	Roll	1
	2.5448MBOR	No.10 Metal Chain - Black Onyx (24 m Roll)	Roll	1
	2.5448MPWR	No.10 Metal Chain - Pure White (24 m Roll)	Roll	1
	2.5448MGMR	No.10 Metal Chain - Gunmetal Nickel (24 m Roll)	Roll	1



## LUNA Tubular Motor Components

All pricing excludes GST. Subject to change without notification.

	<b>KPS Item Number</b>	<b>Description</b>	<b>UOM</b>	<b>Size/Box QTY</b>
	2.5449W	Roll Chain Connector - White	Each	1000
	2.5449BLACK	Roll Chain Connector - Black	Each	1000
	2.5449CLEAR	Roll Chain Connector - Clear	Each	1000
	YT-1532	Clear Round Chain Stoppers	Each	1000
	LRC-38	Luna Motor Roman Clip 38 mm	Each	100
	LRC-43	Luna Motor Roman Clip 43 mm	Each	100



## LUNA Accessories

All pricing excludes GST. Subject to change without notification.



KPS Item Number	Description	UOM	Size/Box QTY
L-CR15	Luna 15 Channel Remote	Each	25



302-002	Luna 5 m - Magnetic Charger	Each	25
---------	-----------------------------	------	----

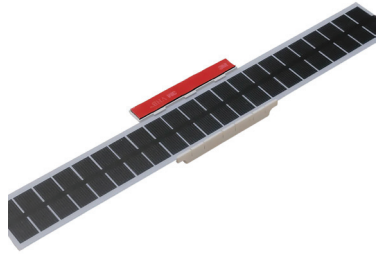


302-001	Luna 3m - USB C Charger	Each	25
---------	-------------------------	------	----



## LUNA Accessories

All pricing excludes GST. Subject to change without notification.



KPS Item Number	Description
302-003	Luna Solar Panel Interior Type L.5WP

UOM	Size/Box QTY
Each	50



L-SCM	Luna Smart Control Module
-------	---------------------------

Each	50
------	----



L-INF	The Infnit Hub
-------	----------------

Each	1
------	---



Please scan the QR code  
to view Luna instructional videos



@LunaTechnologyAutomation

Matter training and education must be completed at our training facility.



(03) 9308 8574 | [sales@koolpelmet.com.au](mailto:sales@koolpelmet.com.au) | [koolpelmet.com.au](http://koolpelmet.com.au)