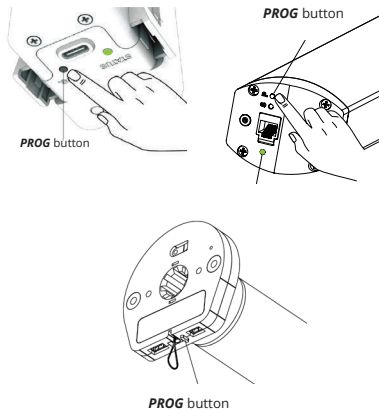
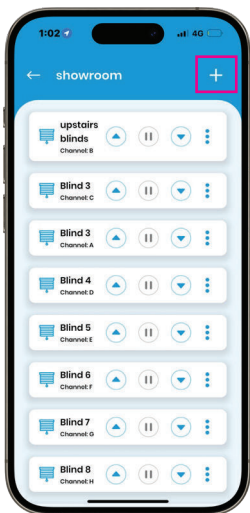
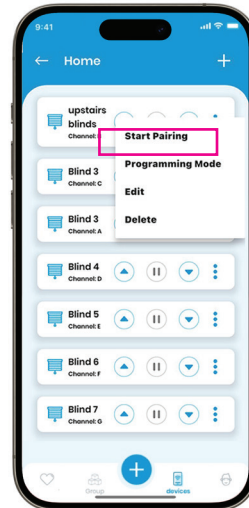


# INFINITE HUB INSTRUCTION HOW TO GROUP MOTORS



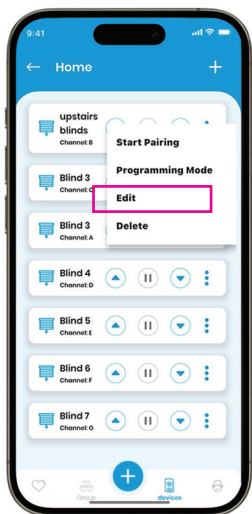
**STEP 1: ADD A NEW MOTOR**  
Tap the '+' button to add new motor



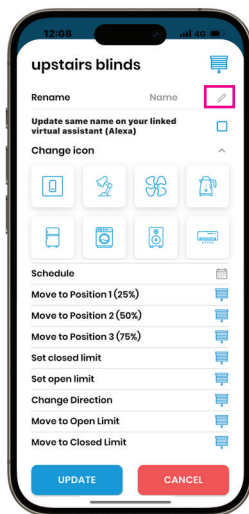
**STEP 2: ACTIVATE PARING MODE**  
Press and hold the **PROG** button of the motor until it remains green to enter paring mode.

**STEP 3: START PARING**  
Tap the '⋮' button and tap 'Start Pairing'. The motor will jog once for successful pairing.

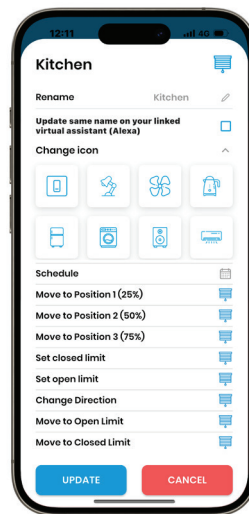
**STEP 4: PAIR OTHER MOTORS**  
To pair other motors to the same group, tap the '⋮' of the same line as the initial motor that was paired, and program the same way.



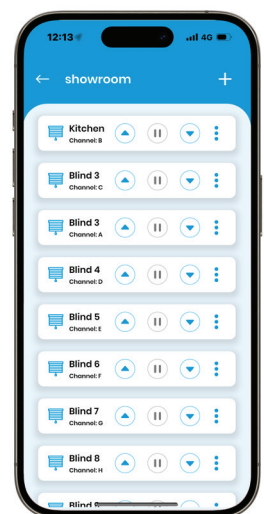
**STEP 5: RENAME GROUP**  
To rename group press the 'Edit' button.



**STEP 6: RENAME GROUP**  
Press '✎' on top right.



**STEP 7: RENAME GROUP**  
Change the group name.



**ALL DONE!**  
The group has been set for your motor.